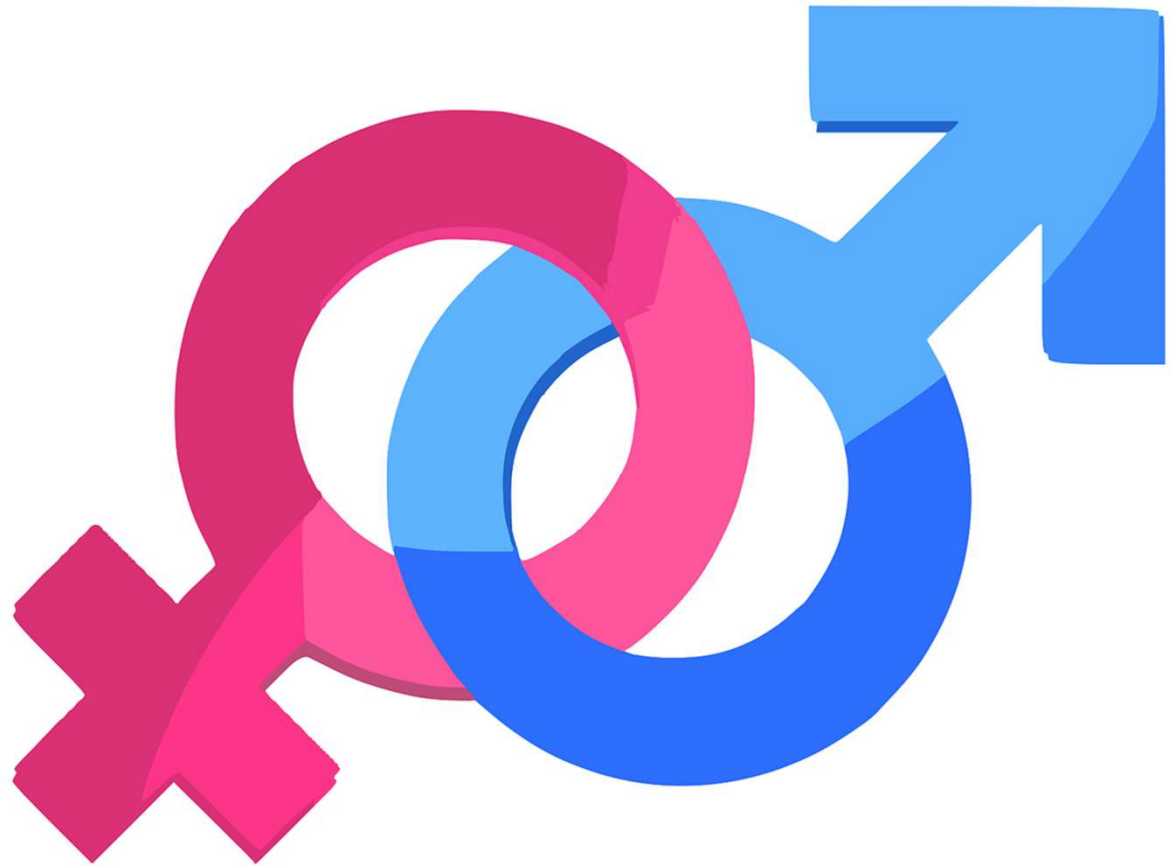
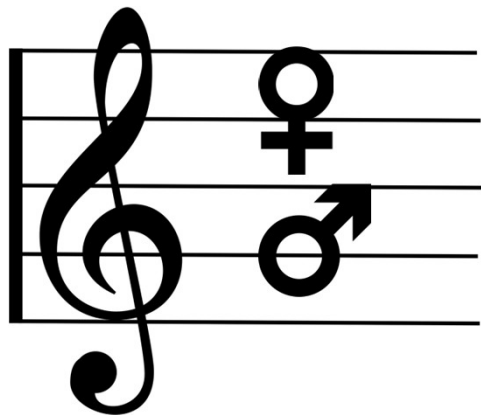


CHRIST CHURCH
HUNTINGDON

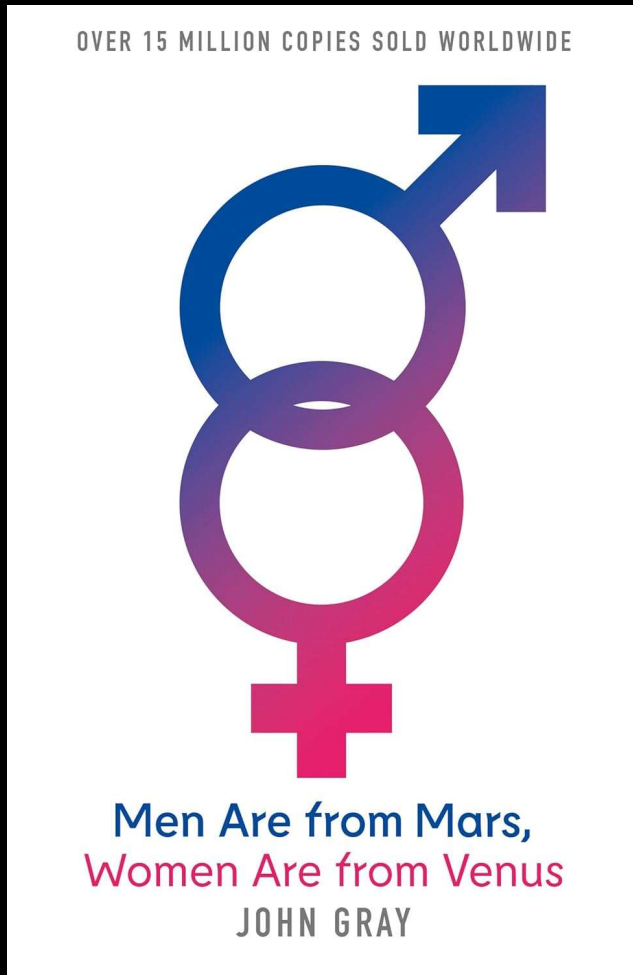


**#1 Equal
and
Different**



Men & Women
“Positive Complementarianism”

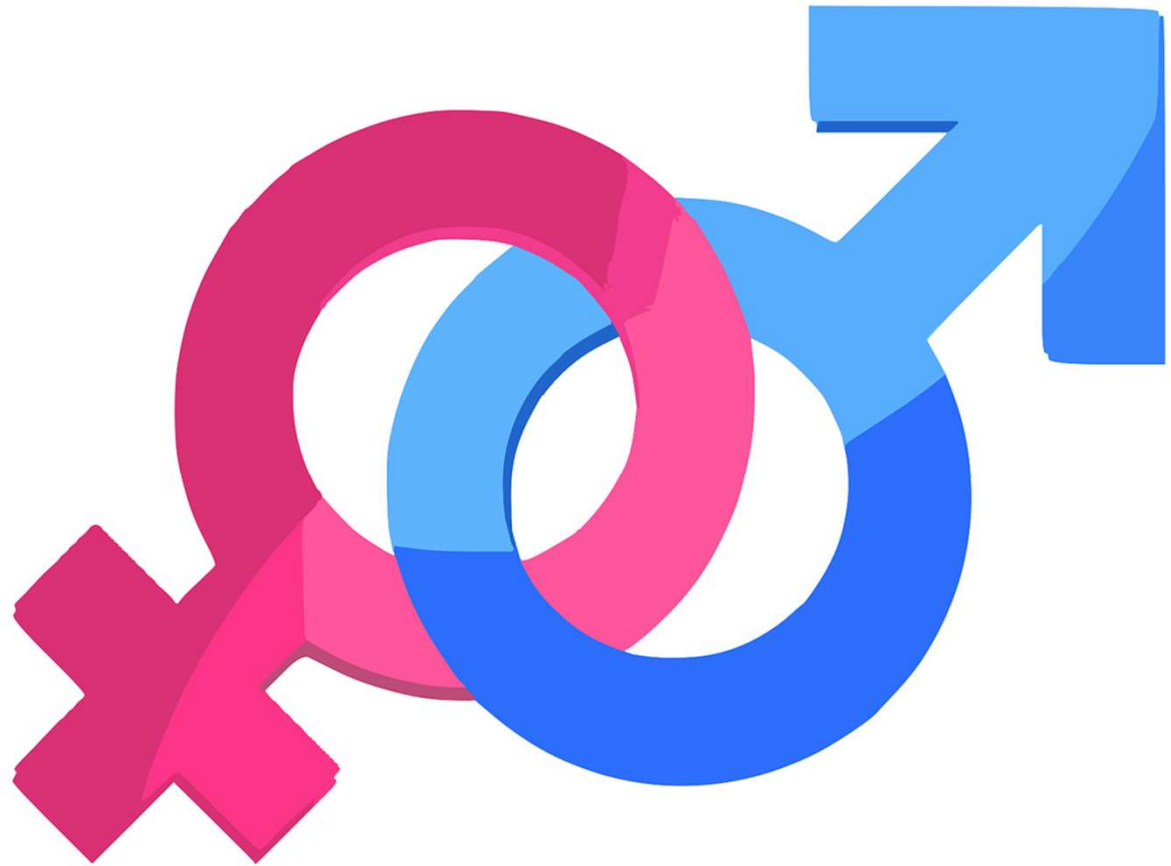
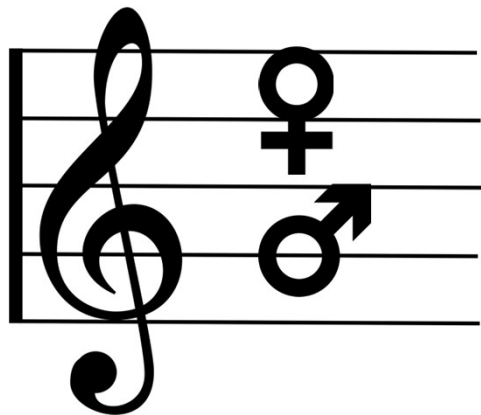
Men & Women #1 - "Equal and Different"



CHRIST CHURCH
HUNTINGDON



**#1 Equal
and
Different**



Men & Women
“Positive Complementarianism”

Men & Women #1 - "Equal and Different"

1) CREATION

Gen 1:27-28
Gen 2:18-25

Men and Women are equal in dignity
yet different in design

2) CRISIS

Gen 3,
eg v16

Men and Women are equally fallen
yet show brokenness in different ways

3) CHRIST

Jn 1:14, Lk 8:3, Mt28:1,
Gal 3:28, Eph 5:22-33

Men and Women are equal in the church
yet Christ has different roles for us

4) NEW CREATION

1 Cor 15, Matt 22:30
Rev 7:9, 19:1, 21:2

Men and Women though different will
one day be praising Christ as his bride!

